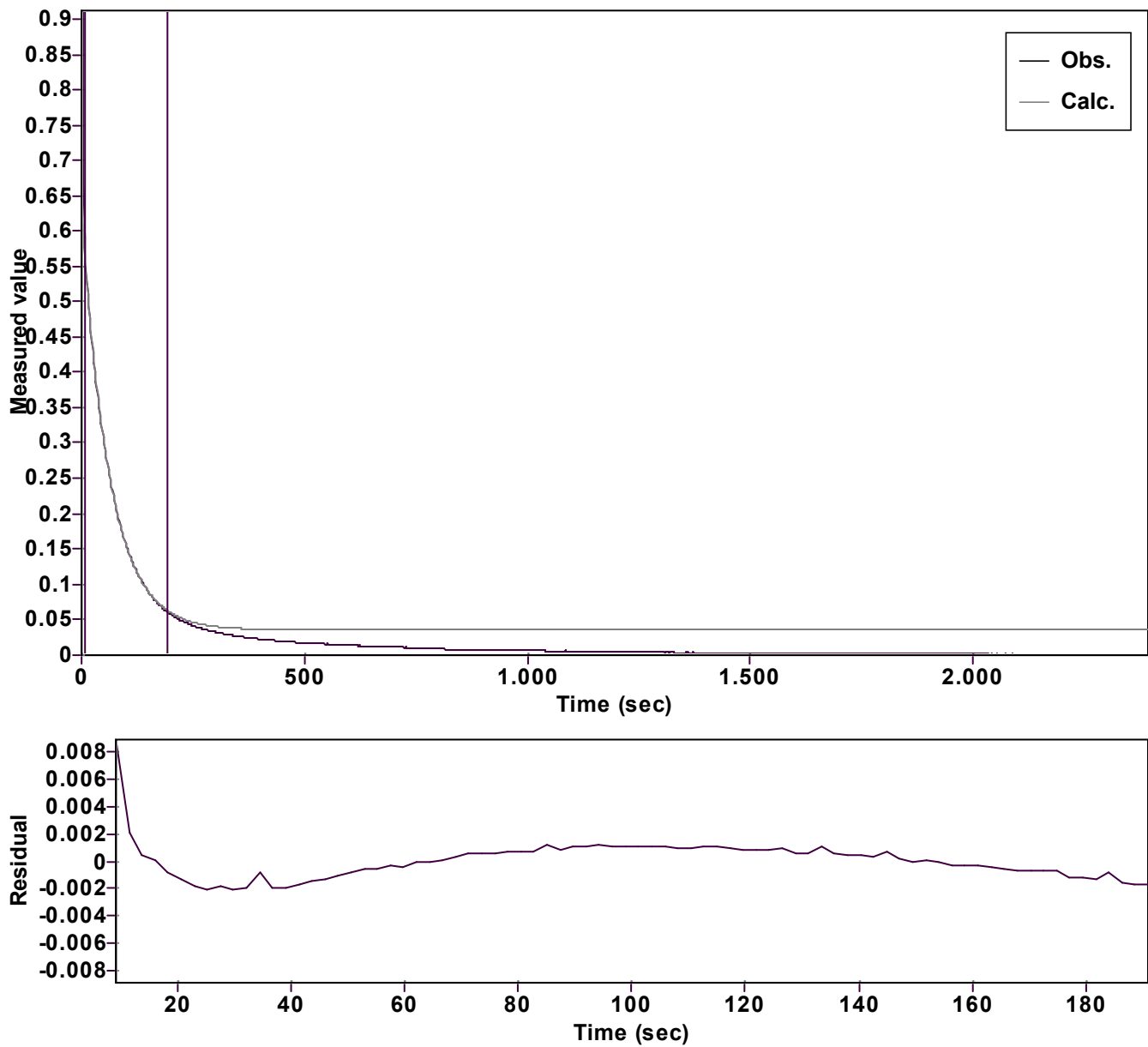


Evaluation of kinetic data with ExpoFit V 1.3

Graph



Function: y = A exp (-kx) + C (Exponential decrease)		Reference point: 0 (Zero)	
Amp A = 0.591978231062604 Â± 0.000748031929263		Quality r ² = 0.9998841595004	
Rate k = 0.015977859018270 Â± 0.000061923051672		Data points = 80 of 1041	
Final C = 0.034991742244487 Â± 0.000633442033219		Conversion = 54.1 %	
Start at position: 9.2 / 0.55499 (39.2 %)		End at position: 190.9 / 0.06128 (93.3 %)	
ExpoFit file: vinylazide_60 equiv_mfa+Nu_c01 (Data-Extract at {Date of file: 15/10/2025 20:55:06			
Source file: vinylazide_60 equiv_mfa+Nu_c01 (Data-Extract at {Date of file: 23/05/2025 22:55:58			
Type of source file: Universal ASCII - file data			
2007 by Dr. Kempf		Date of print: 15/10/2025 21:32:36	